

Alaska Department of Fish and Game

Habitat Section
Southeast Region



191-20-13400-2033

CORRECTION

Water body name: Lydick Creek

Survey date: 8/24/2024

Quad: Icy Bay D2, D3

Species & Lifestage: COsr

Upper Reach Latitude: 59.997034 **Longitude:** -141.772116

Survey crew: NJ, CD, DK, FC

Lower Reach Latitude: 59.995948 **Longitude:** -141.778520

Findings: We surveyed this cataloged stream using a backpack electrofisher and GPS and found that the stream path is incorrectly mapped. We visually identified juvenile coho salmon. This stream has changed routes starting at waypoint 1182; it now meanders west. The main flow parallels the road and crosses under a bridge at waypoints 1184 and 1185 and continues to run south. We used a drone to attempt to map the route south of the road, but vegetation made it difficult to track; it seems to join with 191-20-13400-2033-3005-4010-5029. This is a highly mobile system and is subject to change routes depending on highwater events. This stream has a braid that crosses the road near waypoint 1183 but reconnects at waypoint 1185 (Table 1; Figures 1–3).

Recommendations: Correct Stream No. 191-20-13400-2033 in the anadromous waters catalog to reflect the field verified stream path (Figure 4).

Nomination: Pending

Table 1.–191-20-13400-2033 survey data.

Waypoint	Latitude	Longitude	Notes	Stream Width ft	Stream Substrate	Habitat Features	Gradient %	Sample Effort	Sample Results
598	59.996290	-141.775544	Map says this is distributary, but not clear from what. Channel flows into road and flows on it for a while. Will come back to survey and map out.				1-2	VI	2 CO
1181	59.996520	-141.773254	Good fish habitat continues upstream of the road. Steady flowing water in several pools for rearing fish. Mild gradient continues, this channel appears to be a route correction of lydick creek.		Small Gravel		4-6		2 CO
1182	59.997038	-141.772138	At point where new creek channel meets the old abandoned channel that is currently shown on the catalog map. this point downstream will need to be route corrected.						
1183	59.996312	-141.775782	Lydick creek new channel crossing road and parallels it for about 200 ft before entering below road. Unclear of where downstream goes now that it's shifted, will fly drone to investigate.		Large Gravel				
1184	59.996873	-141.77746	Channel with lots of flowing water in a moderate channel size approximately 8 feet wide and sandy with small gravel. Maybe a distributary of lydick, or main channel potentially. But seems like a distrib.		Sand		2-4	EF	No Fish
1185	59.996778	-141.777754	Main channel actually appears to parallel the road and then comes under bridge. Water that crosses the road and then comes into the forest appears to be a braid and then reconnect at the bridge outlet.		Sand		2-4		



Figure 1.—Looking upstream at waypoint 1181.



Figure 2.—Braid crossing the road at waypoint 1183.



Figure 3.—Stream going south of the bridge at waypoint 1185.

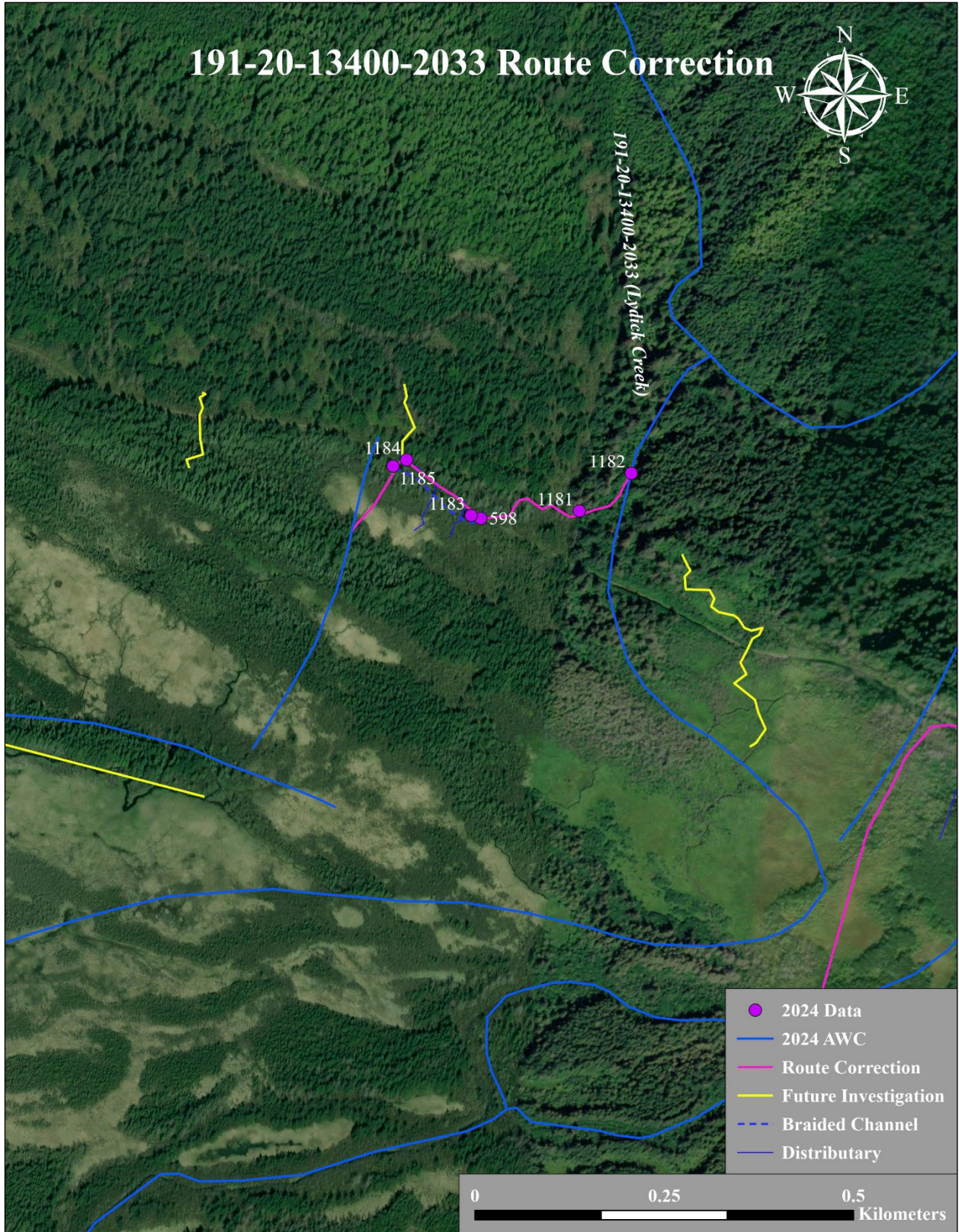


Figure 4.—191-20-13400-2033 route correction map.